



 **LIUGONG**

TOUGH WORLD. TOUGH EQUIPMENT.

**PRODUCT
RANGE**

EUROPE



TOUGH WORLD. TOUGH EQUIPMENT.

Today, LiuGong is a global leader in the construction equipment industry and is one of the fastest growing companies providing customers with innovative products and support right where it is needed.

WE ARE LIUGONG

No tough compromises,
just everything you need
and nothing you don't.

 **9,500+**
EMPLOYEES

 **10**
GLOBAL OFFICES

 **20**
FACTORIES

 **1,000+**
R&D ENGINEERS

 **5**
R&D FACILITIES

 **9**
REGIONAL PARTS DEPOTS

 **300+**
DEALERS

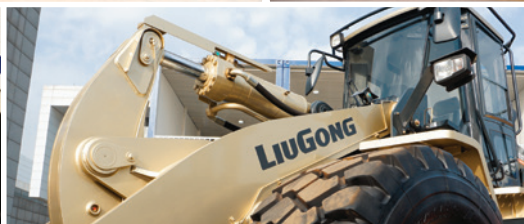
 **60**
YEARS' EXPERIENCE

 GLOBAL OFFICE

 REGIONAL PARTS DEPOTS

**A GLOBAL
LEADER**





LIUGONG

TOUGH WORLD. TOUGH EQUIPMENT.

**INNOVATION &
MANUFACTURING
EXCELLENCE
FOR OVER
60 YEARS**

LIUGONG



TOUGH WORLD. TOUGH EQUIPMENT.

LiuGong is proud to be the only Chinese manufacturer to put European customers first by building Wheel Loaders & Excavators right in the heart of Europe.

Our customers can be confident in our world class machines, which are built to exacting European standards for quality, reliability and safety, by a dedicated team of people who are proud to be called LiuGong.

**MADE IN
EUROPE**

**TESTED IN
EUROPE**

**SUPPORTED
FROM EUROPE**





TOUGH WORLD. TOUGH EQUIPMENT.

**OUR
COMMITMENT
FROM THE
HEART OF
EUROPE**



EUROPEAN CRAFTSMANSHIP

+



JOBSITE ADAPTABILITY

+



UPTIME AND SUPPORT

+



TOTAL COST OF OWNERSHIP

=



CUSTOMER SATISFACTION





TOUGH WORLD. TOUGH EQUIPMENT.

CRAWLER EXCAVATORS

50,000

**EXCAVATORS
MANUFACTURED**

OVER 1/2 BILLION

**PRODUCTIVE
HOURS WORKED**



Crawler Excavators

CRAWLER EXCAVATORS



MODEL	9035E	904D	906D	908E	909ECR	915E	915E	922E	922E	924E
Engine Manufacturer	Yanmar	Yanmar	Yanmar	Yanmar	Yanmar	Cummins	Cummins	Cummins	Cummins	Cummins
Engine Model	3TNV88-BPLY	4TNV88-BSBKC	4TNV94L-BVLY	4TNV98-ZCSLY	4TNV98C-SLY	QSF3.8	QSB4.5	QSB7	QSB6.7	QSB6.7
Emission Rating	EU Stage IIIA	EU Stage IIIA	EU Stage IIIA	EU Stage IIIA	EU Stage IIIB	EU Stage IIIA	EU Stage IV	EU Stage IIIA	EU Stage IV	EU Stage IV
Engine Net Power HP (kW) *	29 (21)	34 (25)	46 (34)	63 (46)	60 (44)	109 (80)	114 (84)	159 (117)	162 (119)	162 (119)
Operating Weight (kg)	3,980	4,080	6,018	7,500	8,900	14,300	16,300	22,850	23,650	24,500
Bucket Breakout Force (kN)	30	28.3	41	56	63	89.8	89.8	140	140	140
Bucket Capacity (m ³)	Min.	0.06	0.06	0.12	0.14	0.14	0.36	0.36	0.59	0.59
	Max.	0.3	0.3	0.3	0.4	0.4	0.77	0.77	1.47	1.47



CRAWLER EXCAVATORS

LiuGong excavators deliver the perfect balance of performance, precision and quality. Enhanced power output, improved breakout force and faster cycle times coupled with outstanding durability all add up and deliver to your bottom line.

MODEL		925E	928E	930E	933E	933E	936E	936E	939E	950E	950E
Engine Manufacturer		Cummins	Cummins	Cummins	Cummins	Cummins	Cummins	Cummins	Cummins	Cummins	Cummins
Engine Model		QSB6.7	QSB6.7	QSB6.7	QSB7	QSB6.7	QSL9	QSL9	QSL9	QSM11	QSG12
Emission Rating		EU Stage IV	EU Stage IV	EU Stage IV	EU Stage IIIA	EU Stage IV	EU Stage IIIA	EU Stage IV	EU Stage IV	EU Stage IIIA	EU Stage IV
Engine Net Power HP (kW) *		175 (129)	175 (129)	212 (156)	212 (156)	212 (156)	275 (202)	284 (209)	284 (209)	353 (260)	383 (282)
Operating Weight (kg)		25,500	27,500	32,900	32,900	32,700	35,000	36,200	37,300	46,500	48,000
Bucket Breakout Force (kN)		165	165	187	187	187	232	232	232	265	265
Bucket Capacity (m ³)	Min.	0.59	0.59	0.75	0.75	0.75	1.6	1.6	1.6	2.8	2.8
	Max.	1.57	1.57	2.24	2.24	2.24	2.63	2.63	2.63	3.7	3.7





LIUGONG

TOUGH WORLD. TOUGH EQUIPMENT.

**WHEEL
LOADERS**

**400,000
WHEEL LOADERS
DELIVERED**



Wheel Loaders

WHEEL LOADERS



Model		816G	835H	835H	848H	848H
Engine Manufacturer		Yanmar	Cummins	Perkins	Cummins	Cummins
Engine Model		4TNV98-ZPYW	QSB6.7	1204F-E44TAN	QSB6.7	QSB6.7
Emission Rating		EU Stage IIIA	EU Stage IIIA	EU Stage IV	EU Stage IIIA	EU Stage IV
Engine Net Power HP (kW) *		65 (48)	147 (108)	126 (93)	147 (108)	175 (129)
Operating Weight (kg)		7,100	10,800	10,860	14,200	15,160
Tipping Load - Straight (kg)		4,900	7,900	9,452	10,200	11,905
Tipping Load - Full Turn (kg)		4,200	6,800	7,369	9,600	10,789
Bucket Capacity (m ³)	Min.	0.8	1.5	1.5	2.5	2.5
	Max.	1.6	3	3	4	4



WHEEL LOADERS

LiuGong wheel loaders strike the **perfect balance** between **fuel efficiency** and **worksite productivity** with integrated **advanced technologies** and **rugged design**. They provide **outstanding performance** with **no compromise on comfort**.

Model		856H	856H	862H	877H	877H	890H	890H
Engine Manufacturer		Cummins	Cummins	Cummins	Cummins	Cummins	Cummins	Cummins
Engine Model		QSL9.3	QSB6.7	QSL9.3	QSM11	QSL9	QSM11	QSG12
Emission Rating		EU Stage IIIA	EU Stage IV	EU Stage IIIA	EU Stage IIIA	EU Stage IV	EU Stage IIIA	EU Stage IV
Engine Net Power HP (kW) *		209 (154)	218 (160)	245 (180)	351 (258)	320 (235)	371 (273)	356 (262)
Operating Weight (kg)		17,000	17,800	22,132	25,300	27,412	30,600	30,800
Tipping Load - Straight (kg)		12,400	13,400	16,600	20,328	19,490	23,622	23,878
Tipping Load - Full turn (kg)		10,800	11,500	14,100	17,560	16,080	20,600	20,600
Bucket Capacity (m ³)	Min.	2.6	2.6	3	3.5	3.5	4.5	4.5
	Max.	5.6	5.6	6	8	8	9	9





 **LIUGONG**

TOUGH WORLD. TOUGH EQUIPMENT.

**FULL
PRODUCT
RANGE
EUROPE**

 **Full Product Range**

SKID STEER LOADERS

Compact in size, big on performance. LiuGong Skid Steer Loaders offer unmatched power to help you push through any task.



Model	365A	365B	375A	375B	385A	385B	388B
Engine Manufacturer	Yanmar	Perkins	Yanmar	Yanmar	Yanmar	Yanmar	Perkins
Engine Model	4TNV98-ZCPLYSC	404D-22	4TNV98T-ZCNLYSC	4TNV98C-PLYS	4TNV98T-ZCNLYSC	4NV98CT-NLYS	Perkins 854F-E34TA
Emission Rating	EU Stage IIIA	EU Stage IIIA	EU Stage IIIA	EU Stage IV	EU Stage IIIA	EU Stage IV	EU Stage IV
Engine Net Power HP (kW) *	65 (48)	46 (34)	77 (57)	65 (48)	77 (57)	69 (51)	91 (67)
Operating Weight (kg)	2,950	2,950	3,420	3,100	3,500	3,750	5,190
Rated Operating Capacity (kg)	795	795	955	865	1,045	1,045	2,138
Pump Flow (L/min.)	Standard	79.2	69	84.3	69	84.3	79.2
	High	120	N/A	122.1	107	122	120.2
Height to Bucket Hinge Pin (mm)	2,923	2,923	3,105	2,923	3,106	3,278	3,200



TOUGH WORLD. TOUGH EQUIPMENT.



BACKHOE LOADER

Model	777A
Engine Manufacturer	Perkins
Engine Model	1104D-44TA
Emission Rating	EU Stage IIIA
Engine Net Power HP (kW) *	102 (75)
Operating Weight (kg)	8,400
Front Loader Bucket Capacity (m ³)	1
Digging Depth – Std Arm (mm)	4,440



ROLLER

Model	6612
Engine Manufacturer	Cummins
Engine Model	QSB4.5
Emission Rating	EU Stage IIIA
Engine Net Power HP (kW) *	158 (116)
Operating Weight (kg)	13,200
Frequency (Hz)	32/40
Amplitude (mm)	1.85/0.85



MOTOR GRADER

Model	418
Engine Manufacturer	Cummins
Engine Model	QSB6.7-C220
Emission Rating	EU Stage IIIA
Engine Net Power HP (kW) *	223 (164)
Operating Weight (kg)	15,650
Moldboard Blade Width (mm)	3,960

UTILITY / ROAD & HIGHWAY EQUIPMENT

LiuGong offers a range of construction equipment designed to perform in a wide array of applications and to deliver on your bottom line.



Utility / Road & Highway Equipment

WORK TOOLS

LiuGong provides a range of
purpose designed
attachments and work tools
to give you increased
versatility for any jobsite
to handle multiple jobs
with ease and precision.



**GENERAL PURPOSE
BUCKET**



**LIGHT MATERIAL
BUCKET**



**ROCK
BUCKET**



**SIDE-DUMP
BUCKET**



**DIGGING
BUCKET**



**QUICK
COUPLER**



**TILT
COUPLER**



BREAKER



SHEARS



**GRAPPLE
FORKS**



**GRAPPLE WITH
ALIGNED TEETH**



**GRAPPLE WITH
CROSSED TEETH**



**PALLET
FORKS**



SWEEPER



PLANER





Dedicated service
and after-sales
support



Quality Assurance
making every part
meet the highest
standards



Next day supply of
genuine LiuGong parts
from our European
Parts Distribution
Centre



Right parts.
Right price.
Right service



Highly trained
technicians utilizing
the latest diagnostic
equipment



Training provided by
the best qualified
specialists



Multi-lingual Service
helpline and online
support



+25 Dealers
in Europe

Fit for purpose might convince you to buy your first machine, but it's **uptime and support and total cost of ownership** which will keep you coming back to buy more machines. Having confidence in the machine's back up and support network is a vital part of the purchasing decision. **LiuGong delivers them all.**

JOBSITE UPTIME & SUPPORT

We understand
your job.
More importantly,
your business.



Support



TOUGH WORLD. TOUGH EQUIPMENT.

Illustrations and pictures have a demonstrative character and may include optional equipment, and may not include all standard equipment.
Equipment and options vary by regional availability. Specifications and designs are subject to change without prior notice.
This material does not constitute an offer within the meaning of the law, and all data contained therein are for informational purposes only.

* 1 Kilowatts (kW) = 1.3596 Metric Horsepower (hp)



TOUGH WORLD. TOUGH EQUIPMENT.

For more than 60 years, LiuGong Machinery has been a leader in China's construction equipment manufacturing industry. From building the country's first modern wheel loader, LiuGong has evolved to become one of the fastest growing, global construction equipment companies offering a full line of extreme duty, intuitive machines for construction equipment owners constantly challenged to do more with less.

Today, LiuGong is a global success story with 19 product lines, 20 manufacturing facilities including plants in Poland, Brazil and India & 300+ dealers in more than 100 countries.

GLOBAL PRODUCT RANGE



Global Product Range



TOUGH WORLD. TOUGH EQUIPMENT.

LiuGong Europe, Headquarters

Al. Jerozolimskie 134, 02-305 Warsaw, Poland

LiuGong Europe, Factory

ul. Kwiatkowskiego 1, 37-450 Stalowa Wola, Poland



WWW.LIUGONG-EUROPE.COM
@ INFO@LIUGONG-EUROPE.COM
f FACEBOOK.COM/LIUGONGEUROPE
▶ YOUTUBE.COM/LIUGONGEUROPE

LG-RANGE-EU-10062019-ENG